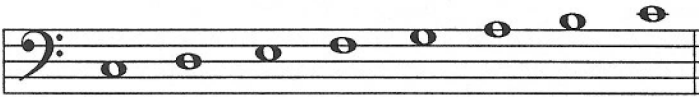
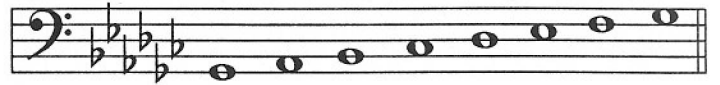


Major Scales

C Scale



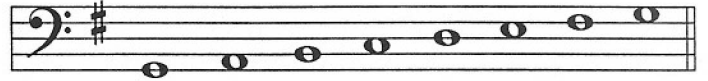
Gb Scale



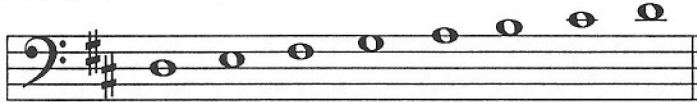
Db Scale



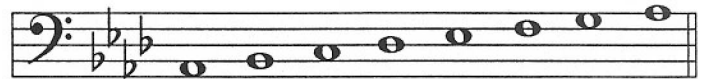
G Scale



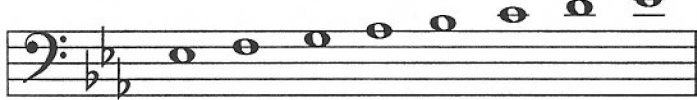
D Scale



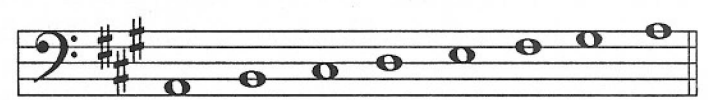
Ab Scale



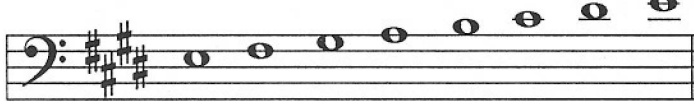
Eb Scale



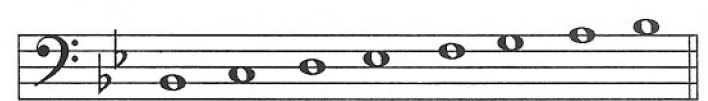
A Scale



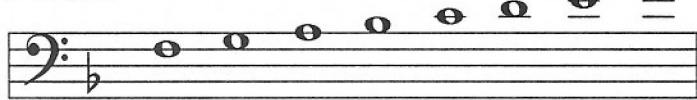
E Scale



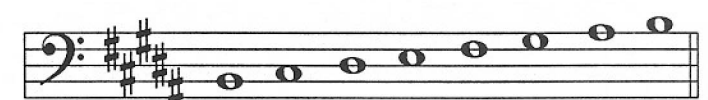
Bb Scale



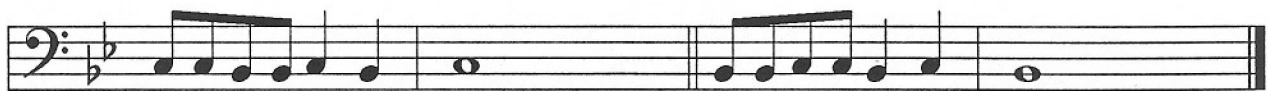
F Scale



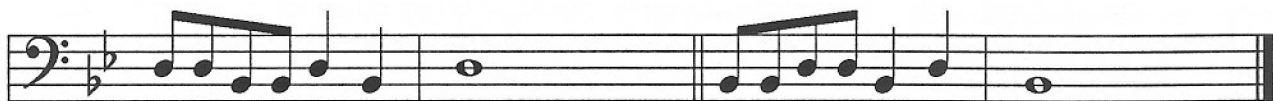
B Scale



Leuba Patterns



Also may use triplets and sixteenths instead of eighth notes used in this example.



Continue through the rest of the scale. (Two octaves, if possible.)

The Leuba patterns should also be buzzed on the mouthpiece. They are, however, intended to be blown into the instrument without buzzing. Tuning the airstream without buzzing will help get control for a proper center.